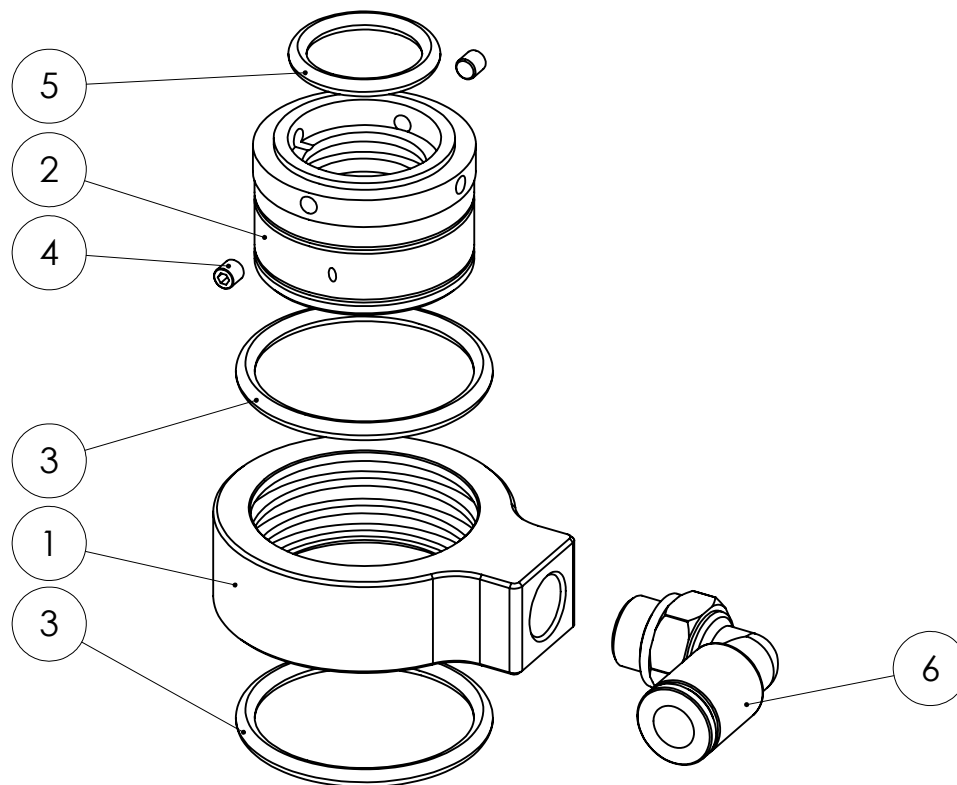
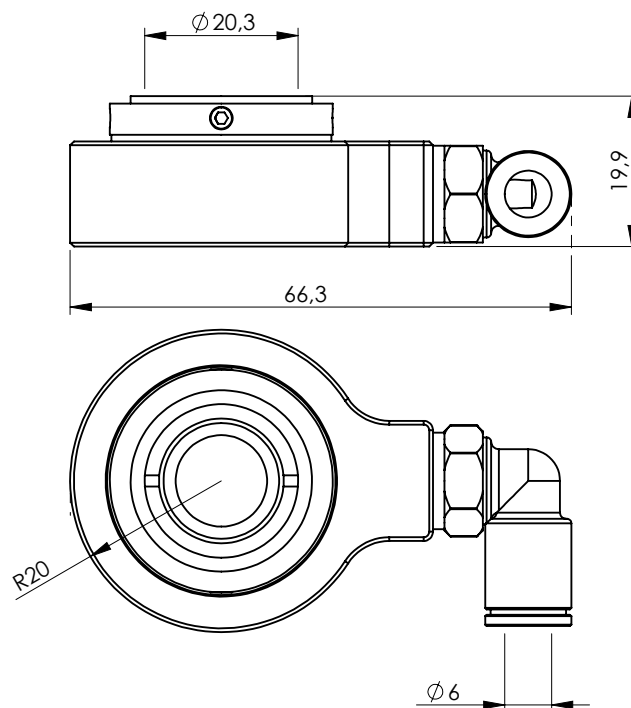


KOMPATYBILNY Z:

NUMER:

UES®

108003



NR ELEMENTU	NUMER CZĘŚCI	OPIS	ILOŚĆ
1	DT01.1220.00	Adapter 108003/a	1
2	DT01.1221.00	Adapter 108003/b	1
3	OR01.1045.33	O-ring	2
4	DIN913-45H-M3x3	Kołek dociskowy M3x3 DIN913	2
5	OR01.1029.31	O-ring	1
6	PA01.1110.06	Złączka obrotowa 90° 1/8"-6 °C	1